



Ben Franklin Crafts®

Holiday Light Up Card

Creative Idea by Joy S.

INSTRUCTIONS CONT.

To cut out the 3 1/2" square window, you can use the X-acto knife or use the SureCut Paper Trimmer. For both, refer to the diagram. To use the X-acto knife, measure a 3 1/2" square that is 1 3/4" down from the top and 3/4" in from both the 1" and 6" creased vertical lines. To use the paper trimmer, line up the trimmer wire 3/4" in from the 1" line, in the section between the vertical 1" and 6" scored lines. Start the cut 1 3/4" down from the top and stop at 5 1/4". Repeat 3/4" before the 6" scored line. Turn the cardstock around to the horizontal cuts. Match the cuts and make the cuts, should be 1 3/4" and 5 1/4" down from the top.

Putting the box card together -

Put double stick tape on all four of the outer flaps on the insert box. Carefully line up behind the box window cutout and tape in place. Fold box up and tape the back of the box to the end tab. fold flaps in at the top and bottom.

Finishing -

Frame the cutout window with the 3/8" strips. Place the 4 1/4" strips along the window opening vertically and tape down. Wrap the 11 1/2" strips around the top and bottom of the window and completely around the box and tape down.

Stamp a sentiment and make a little banner for the space below the window. Attach with foam pop dots.

Tip: You may want to add a small post-it note to let the recipient know how to turn on the lights.



NOTE: Sample shown used CC Design Holiday Penguin Stamps # 30158764 and "Merry and Bright" word stamp from Lawn Fawn Snow Day #30157210.

Supplies:

- 1 qty. 6" x 6" cardstock for box insert
- 1 qty. 7 3/4" x 11 1/2" cardstock for outer box frame
- 2 qty. 3/8" x 4 1/4" cardstock strips for front
- 2 qty. 3/8" x 11 1/2" cardstock strips for front
- 1 qty. approx. 1" x 4" cardstock for sentiment banner
- 1 qty. Flashing Bulb Necklace #23025060
- Stamped and colored images for embellishing*
- Stamp and ink for sentiment*
- Meriken 1/4" double-stick tape #30013284
- Foam Pop Dots #30008288

Tools:

- Sharp Scissors
- Ruler and pencil
- Martha Stewart Crafts Score Board #30103578
- Fiskars SureCut Paper Trimmer #30088131
- Fiskars 1/8" Circle Punch #77178541
- X-Acto Knife #23975
- Cutting Mat

Instructions:

Stamp and color the designs you want to use for the box insert. Cut out images and set aside for now.

(INSTRUCTIONS CONTINUED)

Holiday Light Up Card

Creative Idea by Joy S.

Diagram 1

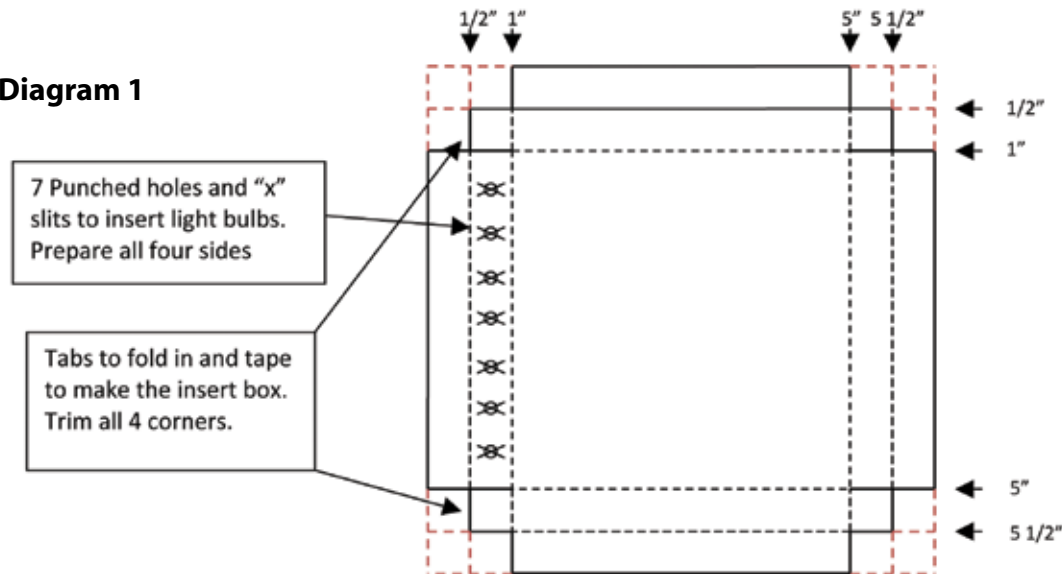
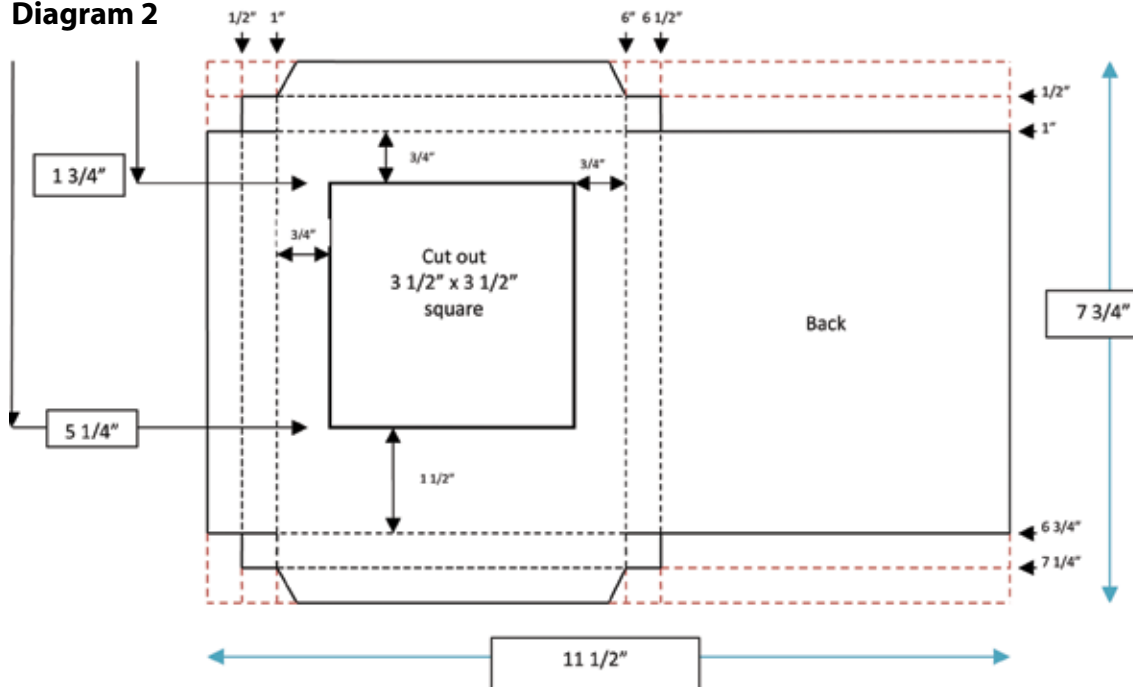


Diagram 2



Making the Box Insert with lights - Diagram 1

Take the 6" x 6" cardstock and place on the MSC Score Board. Score at the following points: 1/2", 1", 5" and 5 1/2". Turn the cardstock one quarter turn and score at the same points. There should be 1" and 1/2" scored lines completely around the square cardstock. Refer to the diagram and cut off at the corners to form the tabs.

Take the flashing bulb necklace and there should be 28 lights, so 7 lights for each of the four sides. Measure and mark every 1/2" along the second section on each side (1/2" to 1" section). There should be 7 marks on each side. Use the 1/8" hole punch and punch at each mark. Use the X-acto knife and make a small "x" over each punched hole. This will help the bulb push through. Fold the tabs in and tape to form a box with extended tab on each side. This will be taped to the inner box later.

Make sure that the on/off switch is at the bottom of the box; carefully push the light bulbs through the holes so the bulbs show through to the inside of the box. Go completely around the box. If the bulbs move around too much, use a little glue to stabilize them. Add whatever stamped images, stickers, snow, etc. you want to decorate the inside of the insert box. **Optional:** You can cover with a piece of clear acetate if you want. Set aside for now.

Making the outer frame box – Diagram 2

Take the 7 3/4" x 11 1/2" cardstock and place lengthwise onto the MSC Score Board to score the vertical lines. Score at the following points: 1/2", 1", 6" and 6 1/2".

Turn the cardstock to score the horizontal creases. Score at the following points: 1/2", 1", 6 3/4" and 7 1/4".

Follow the bold lines on the diagram for the cutting lines and cut and trim as needed.

(INSTRUCTIONS CONTINUED ON BACK)