



## POCKET FAVOR BOX



### SUPPLIES

- 1 qty. 6" x 6" Printed cardstock
- 1 qty. 3" x 3" Cardstock – light brown or green for turtle body
- 1 qty. 3" x 3" Printed Cardstock – turtle shell
- 1 qty. Jumbo Paperclip
- Meriken 1/4" Double Stick Tape #30013284
- Pop Up glue Dots #30001511
- 8" of 1/4" Satin ribbon or similar for bow
- Optional: Black or Brown ink for distressing turtle edges

### TOOLS

- WeR Envelope Punch Board #30144425
- Echo Park Turtle die #30164267 or similar
- Big Shot Die Cutting System #30162008
- Fiskars 1/8" Hole Punch #77178541
- Sharp Scissors

### INSTRUCTIONS

Making the Favor Box-

Take the 6" x 6" cardstock and place on the WeR Envelope Punch Board. Align the left edge of the cardstock at the 1 1/2" point. Punch and score. Slide the cardstock to the left and align the left edge at the 3 1/2" point. Punch and score.

Rotate the cardstock counterclockwise a quarter turn. Align the left edge at the 2 1/2" point. The Score Guide point should line up with the scored line. Punch and score. Slide the cardstock to the left and align the left edge at the 4 1/2" point. The Score Guide point should line up with the scored line. Punch and score.

Rotate the cardstock counterclockwise a quarter turn. Align the left edge of the cardstock at the 1 1/2" point. The Score Guide point should line up with the scored line. Punch and score. Slide the cardstock to the left and align the left edge at the 3 1/2" point. The Score Guide point should line up with the scored line. Punch and score.

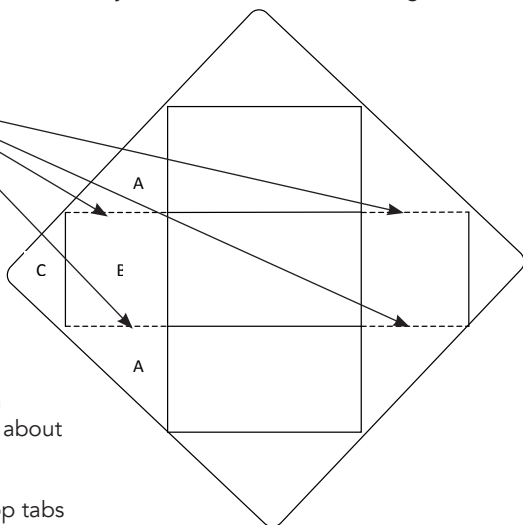
## POCKET FAVOR BOX

You have one more side to punch and score. Rotate the cardstock counterclockwise a quarter turn. Align the left edge at the 2 1/2" point. The Score Guide point should line up with the scored line. Punch and score. Slide the cardstock to the left and align the left edge at the 4 1/2" point. The Score Guide point should line up with the scored line. Punch and score.

Remove the cardstock from the punch board and place all four corners in the corner rounder of the punch board and round the pointed tips. Then, crease at all of the scored lines.

To create the side flaps for the box, snip as indicated by the dashed lines on the diagram.

Snip here at the dashed lines to create the box side flaps.



Fold the box up. On both sides, fold in both flaps A and tape together. Fold up side B and tape to A. Fold middle tab C over the top of side B and tape to the inside of the box. Take the 1/8" Hole Punch and on the two wide tabs, punch two holes about 1/2" down from the tip and 1/2" apart.

Fill the box with your treat. Bring the two top tabs together and thread the ribbon through the holes. Tie the ribbon together into a bow to keep the box closed.

Finishing –

Follow the manufacturer's directions and use the Big Shot die cutting system to cut out one turtle body and two turtle shells. Optional: You can edge the turtle pieces with black or brown ink.

Tape the turtle body to one of the shells. Take one Pop Up glue dot and place on the end of a jumbo paperclip. Place clip on the back of the turtle. Add some double stick tape or another glue dot and place the other shell on top, sandwiching the paperclip in between. Place the turtle paperclip on top of the favor box, slipping the paper clip between the two ribbon holes.